

A 2341



KALMUS ORCHESTRA LIBRARY

GIUSEPPE

VERDI

LA TRAVIATA

Opera in Three Acts

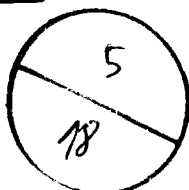
OBOE II

EDWIN F. KALMUS & CO., INC.
Publishers of Music
Boca Raton, Florida



SO 670.88 V484L 948

518



GIUSEPPE VERDI LA TRAVIATA

Nº1. PRELUDIO *TACE*

ATTO PRIMO Nº2. INTRODUZIONE

OBOE II.

Allegro brillantissimo e molto vivace

17 **1** *tr*
f

cresc.

2 **23** **3**
f

cresc. **22**

9 **4** **16** **5** *tr*
(Legni e Fiati) *f*

43 **4** **6** *tr*
(Oboe I.) *f*

ff **1** *ff* **2**

8 Sì, sì? l'ho già in cor. Dunque at_tenti, Sì, at - tenti al can.

7 .tor. *ff*

BRINDISI NELL'INTRODUZIONE
Allegretto

21 41 a_mor fra i ca - - licci più caldi baci a -

8 vrà. *f*

40 un fer - vi-do ac -

-cento lu_sin_ghier. 9 *mf*

pp

16

10 *pp*

cresc.

VALZER - DUETTO NELL' INTRODUZIONE
 (BANDA INTERNA)

Allegro brillante

180

Un

(In mancanza della BANDA)

Musical score for vocal line, measures 1-31. The score is written in a single treble clef with a key signature of two flats (B-flat and E-flat). The time signature is 3/4. The music features various dynamics including *p* (piano), *f* (forte), and *mf* (mezzo-forte). There are several slurs and phrasing marks. Measure numbers 1, 2, 21, and 31 are indicated above the staff. The lyrics "Ah si, da un an - no. Un" are written below the staff starting at measure 21. The piece concludes with a double bar line and a key signature change to one flat (B-flat).

(ORCHESTRA)
11 Andantino
 di. **31**

Musical score for orchestra, measures 1-31. The score is written in a single treble clef with a key signature of two flats. The time signature is 3/8. The music consists of rhythmic patterns with accents and slurs. Measure numbers 4, 22, and 31 are indicated above the staff. The piece concludes with a double bar line and a key signature change to one flat.

(BANDA)
12 I. Tempo

Musical score for band, measures 1-31. The score is written in a single treble clef with a key signature of two flats. The time signature is 3/4. The music features a variety of rhythmic patterns and dynamics. Measure numbers 91, 14, and 2 are indicated above the staff. The piece concludes with a double bar line and a key signature change to one flat.

di - ol 3 Ad - di - ol

di - ol 3 Ad - di - ol

ff

Detailed description: This block contains a musical score for a vocal line and a piano accompaniment. The vocal line is written in a treble clef with a key signature of two flats and a common time signature. It features a melody with various note values and rests, including a triplet of eighth notes. The piano accompaniment is also in a treble clef, featuring a rhythmic pattern of eighth notes and rests, with dynamic markings of *p* and *f*. The score includes first and second endings for the vocal line, and a final section with a 4-measure rest. The lyrics are "di - ol 3 Ad - di - ol".

STRETTA DELL' INTRODUZIONE

13 Allegro vivo

31 14 15

f ff

Detailed description: This block contains a piano introduction starting at measure 13. The score is written in a treble clef with a key signature of two flats and a common time signature. It begins with a forte (*f*) dynamic and a triplet of eighth notes. The introduction is marked "Allegro vivo" and includes measures 13, 14, and 15. The music features a variety of rhythmic patterns, including eighth and sixteenth notes, and rests. The dynamics range from *f* to *ff*. The score ends with a trill (*tr*) in measure 15.

N° 3. Scena ed Aria Violetta - Finale Atto I.

Allegro 22 **Andantino** 16 28 19 25

18 ah delizia al cor 3 17 **Allegro** Follie! Fol.lie! 10 che far deg-

-g'io? Glo-ire, di voluttà. ne' vortici, di voluttà pe_rir!

ff

Allegro brillante 18 7 **Sempre libera** 12

Andantino Allegro 13 19 15 1 **Sempre libera** 12 29 21

ff *f*

I. Tempo


Fine dell' Atto I.

ATTO SECONDO

N° 4. SCENA ED ARIA ALFREDO

7

All.^o vivace *Recitativo* **12** **25** **1** Andante **30** **2** Allegro **9** Per alie.nar cavalli, cocchi e quanto an.



a tempo
- cor possiede Che mai sento! **14**



Allegro **3** **24** que-



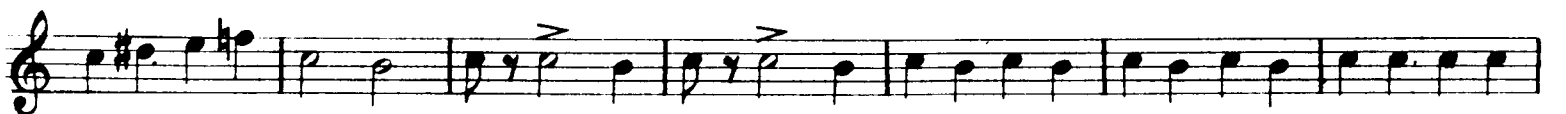
4
-st'onta, quest'onta laverò.



24 que-



-st'onta, quest'onta laverò.



N°5. SCENA E DUETTO

Recitativo - *Allegro moderato* 7

76 6 36 È - d'uo - po... Ah no! giam - mai!

ff *I. Tempo*

(lunga) *Vivacissimo* Non sa - pete 11 9 Al - fre - do Ah! sup.

Ancora più vivo

plizio 13 1

(Ob.I.) *ff* *f*

preferirò mo - rir. 8 *Andante piuttosto mosso*

ff 9 13 51

Andantino *Sostenuto* *Allegro*

9 56 Im - po - nete 6 4 10 10 3 e per

(Ob.I.)

voi che far pos - s'io?... che far pos - s'io? o ge - ne - ro -

ff 11

Allegro moderato *un giorno avrete* 16 6 12 14

- sa

del mio cor 1 12 1

mf

Adagio a piacere

12 fin l'ultimo... Ad - dio! Addio! Felice

ff

state... Ad - di - o!

ff

N° 6. SCENA VIOLETTA

Adagio 6 Allegro 8 Adagio 8 Allegro 8 *Recitativo* 7

Allegro assai mosso
43 A - mami, Al - fre - do, 5 [13] *ff*

SCENA ED ARIA GERMONT

Andante 9 Allégro 25 Andante 6 Io tremo!... Oh ciel!... Co.

...raggio!... «Alfredo al giungervi di questo foglio» [14] **Allegro** *ff*

p Andante piuttosto mosso 11 [15] 4 16 (Ob.I.)

p 4 16 *p* 2 Ma...

ma se alfin ti trovo ancor, ti trovo ancor, Dio m'esaudi! Dio m'esau - di! 2

N° 7. FINALE II.

Allegro brillante

Musical score for the first section, measures 1-18. The music is in treble clef with a key signature of one sharp (F#). It begins with a dynamic of *f* (forte) and *p* (piano). The score includes measures 1 through 18, with measure numbers 8, 17, and 18 boxed. Measure 17 features a triplet of eighth notes. Measure 18 is marked with a fermata. The section concludes with a double bar line and a sharp sign.

CORO DI ZINGARELLE

Allegro moderato

Musical score for the second section, measures 19-28. The music is in treble clef with a key signature of three sharps (F#, C#, G#). It begins with a dynamic of *p* (piano). The score includes measures 19 through 28, with measure numbers 19, 20, and 28 boxed. Measure 19 features a triplet of eighth notes. Measure 20 features a triplet of eighth notes. Measure 28 is marked with a fermata. The section concludes with a double bar line.

3 21 4

(Ob. I.) *p*

CORO DI MATTADORI
Allegro assai mosso

ff

3

f *ff* 3 3

1

22 Allegro assai vivo

19

p

9

pp

23

8

1

pp

16

p

7

2

pp

24

cresc.

25

cresc. ancora

ff

SEQUITO DEL FINALE II

Allegro Allegro agitato

20. 26 53 È sempre vincitore! 9

26

27 Allegro agitato assai vivo

col canto

5 6 che l'odio a - troce puote in

lui più di mia vo - ce.

28 a tempo

5

2 5 35

3 a chi dritto pien n'a - vea. **3** **4** **[29]**

1 non sa pete? Ah! taci. No.

Allegro sostenuto

[30] **2** **1** **2**

Più animato

6 or testimon vi chiamo **2** che qui pa-ga - ta lo

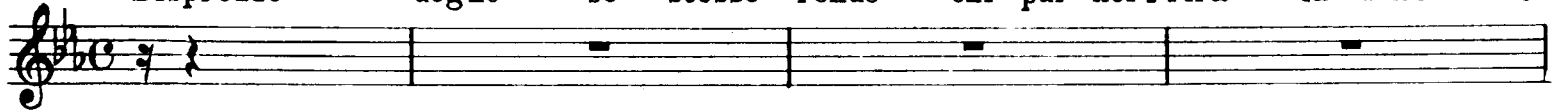
[31] **Velocissimo**

l'ho.

[32]

LARGO DEL FINALE II.**Largo**

Disprezzo degno se stesso rende chi pur nel l'ira la donna of-



-fende... trovar non so.

*Fine dell'Atto II.*

ATTO TERZO

N° 8. SCENA ED ARIA VIOLETTA

Andante 40 *Recitativo* 59 **1** Andantino 16

Recitativo 11 *Andante mosso* 24 **2** 9 Ah! tutto,

tutto fi - ni, *pp* **1**

23 **9** ah! tutto, tutto fi -

-ni, or tut - to, tut - to fi - ni. *pp* **1**

N° 9. Baccanale *Tace*

N° 10. SCENA E DUETTO

Allegro assai vivo

Musical score for the first section, measures 26-39. It consists of three staves. The first staff starts with measure 26, marked *p*, and ends with measure 30, marked *ff*. The second staff starts with measure 31, marked *ff*, and ends with measure 39. The third staff contains rests for measures 31-39, labeled "VUOTA".

Andante mosso

Musical score for the second section, measures 47-56. It consists of six staves. The first staff starts with measure 47, marked *pp*, and includes the lyrics "tutto il fu - turc ne arride - rà." followed by measure 50. The subsequent staves contain instrumental parts for measures 47-56, with dynamic markings *pp* and various articulations.

pp

Allegro

9 7 21 Ah! cruda

Più mosso
sorte

1 2 3 4 5 6 7 8

pp

5 8 17 a niuno in terra sal -

ff

Allegro

varmi è dato.

9 8

ff *f*

14 13 10 6 Ah! Gran

f

Più mosso

Dio! 8 5 8 11

f *ff*

1

ff

N° 11. FINALE ULTIMO

Allegro assai vivo

29 La vedi, padre mio? **1**

(Ob. I.) *mf*

2 **11** amato Al - fre - do. **2**

12 **Andante sostenuto**

ppp

Poco più animato

3 13 2

ppp

1 2

14 12

pp

15

Andantino

1 12 3

p cresc. *cresc. sempre*

16
Allegro

ff

Fine dell'Opera