

# Missa "Papae Marcelli" G. P. da Palestrina (1525 - 1594)

## Kyrie eleison

Bass 1



Ky - rie e - lei - son, Ky - rie

10



e - lei - son, Ky - rie e - lei - son,

15



Ky - rie e - lei - son, Ky - rie e -

20



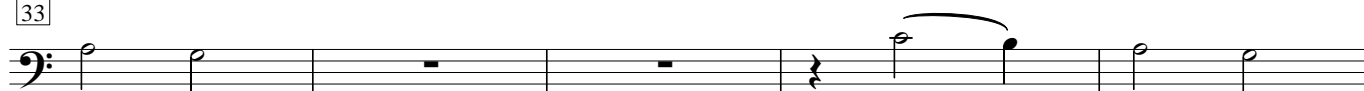
lei - son, Ky - rie e - lei - son.

25



Chri - ste e - lei - son, Chri - ste e -

33



lei - son, Chri - ste e -

38



lei - son, Chri - ste e - lei - son,

45



Chri - ste e - lei - son, e - lei - son.

52



Ky - rie e - lei - son, Ky -

# Missa "Papae Marcelli" G. P. da Palestrina (1525 - 1594)

58

Bass 1

rie e - lei - son, Ky - rie e -

63

lei - son, Ky - rie e - lei -

68

- son, Ky - rie e - lei -

73

- son.

Missa "Papae Marcelli" G. P. da Palestrina (1525 - 1594)

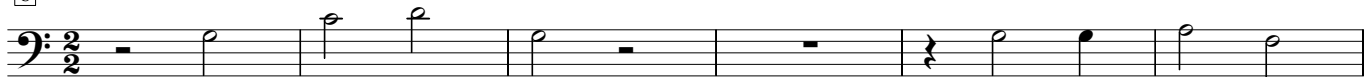
Gloria in excelsis Deo

Bass 1



Et in ter - ra pax ho - mi - ni - bus.

6



Lau - da - mus te, a - do - ra - mus

12



te. Gra - ti - as a - gi - mus ti - bi.

18



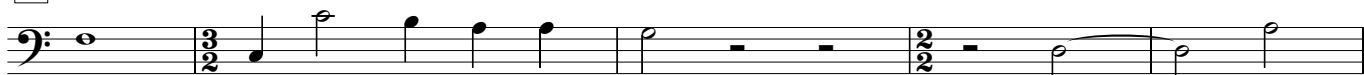
Do - mi - ne De - us, Rex coe - le -

24



stis. Do - mi - ne Fi - li, Do - mi - ne

30



Fi - li u - ni - ge - ni - te Je - su

35



Chri - ste, Je - su Chri - ste.

41



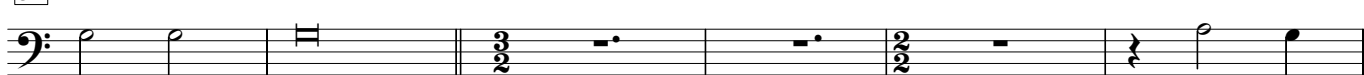
Do - mi - ne De - us, ag - nus De - i,

46



Fi - li - us Pa - tris, Fi - li -

51



us Pa - tris.

Mi - se -



Missa "Papae Marcelli" G. P. da Palestrina (1525 - 1594)

Credo in unum Deum

Bass 1 

...fac - to - rem coe - li et ter - rae, vi - si - bi - li - um

10



om - ni - um, et in - vi - si - bi - li - um. Et in u - num Do - mi -

17




num, Je - sum Chri - stum. Et ex Pa - tre na -

22



tum an - te om - ni - a sae - cu - la. Lu - men de lu - mi - ne,

27




De - um ve - rum de De - o ve -

32




ro. Con - sub - stan - ti - a - lem Pa -

37



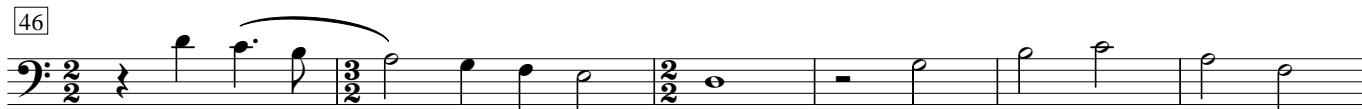
tri per quem om - ni - a fac - ta sunt.

41



et prop - ter no - stram sa - lu - tem,

46



des - cen - dit de coe - lis. Et in - car - na - tus

52



est de Spi - ri - tu sanc - to.



# Missa "Papae Marcelli" G. P. da Palestrina (1525 - 1594)

126 Bass 1

tas. Et A - po -

131

- li - cam ec - cle - si - am. Con - fi - te - or

136

u - num bap - tis - ma in re - mis - si - o - nem pec -

142

ca - to - rum. Et ex - spec -

147

to, et ex - spec - to, re - su - rec - ti - o - nem

153

mor - tu - o - rum. ...et vi - tam ven - tu -

163

ri sae - cu - li. A - men, A -

169

- men, A - men.

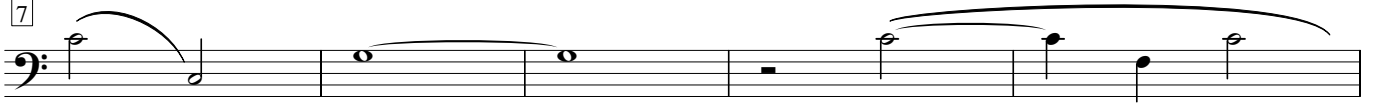
Missa "Papae Marcelli" G. P. da Palestrina (1525 - 1594)

Bass 1



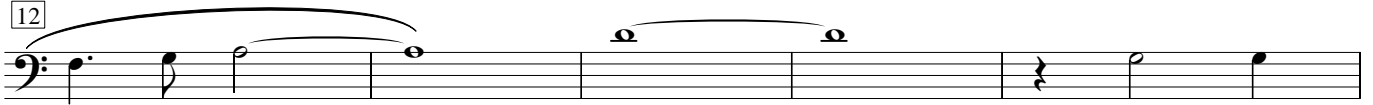
Sanc\_\_\_\_\_ - tus, Sanc\_\_\_\_\_ -

7



\_\_\_\_\_ - tus, \_\_\_\_\_ Sanc\_\_\_\_\_ -

12



\_\_\_\_\_ - tus \_\_\_\_\_ Do - mi -

17



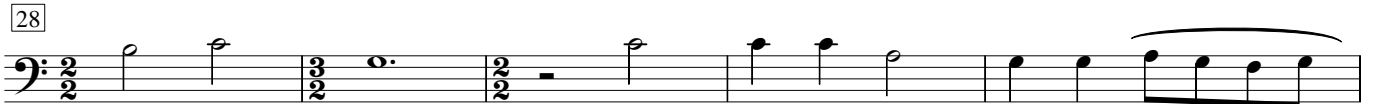
nus De - us Sa - ba\_\_\_\_\_ - oth, \_\_\_\_\_ Do - mi - nus

23



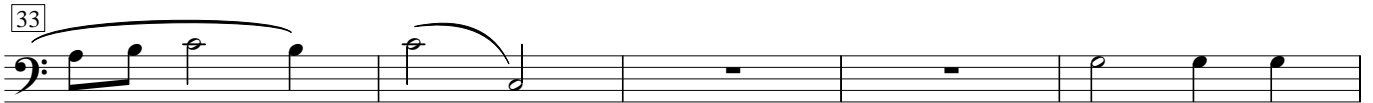
De - us Sa - ba - oth, \_\_\_\_\_ Do - mi - nus De - us

28



Sa - ba - oth. \_\_\_\_\_ Ple - ni sunt coe - li et ter\_\_\_\_\_ -

33



\_\_\_\_\_ - ra, \_\_\_\_\_ ple - ni sunt

38



coe - li et ter\_\_\_\_\_ - ra

43



glo - ri - a tu\_\_\_\_\_ - a,



Missa "Papae Marcelli" G. P. da Palestrina (1525 - 1594)

48

Bass 1

glo - ri - a tu - a, glo - ri - a tu -

53

- a, glo - ri - a tu - a. Ho - san - na

60

in ex - cel - sis, ho - san -

67

na in ex - cel - sis, in ex - cel -

73

- sis, ho - san - na in ex - cel - sis.



Missa "Papae Marcelli" G. P. da Palestrina (1525 - 1594)

Bass 1

Ag - nus De - i,

6

Ag - nus

10

De - i,

14

qui tol - lis pec - ca - ta mun - di, mun -

18

- di, qui tol - lis pec -

22

ca - ta mun - di, qui tol - lis

27

pec - ca - ta mun - di: mi - se - re - re

31

no - bis, mi -

36

- se - re - re no - bis, mi - se - re - re

42

no - bis, mi - se - re - re no - bis.

Missa "Papae Marcelli" G. P. da Palestrina (1525 - 1594)

Bass 1 *Canon*

Ag - nus De - i, Ag - nus De - i,

5

Ag - nus De - i,

8

qui tol - lis pec - ca - ta mun -

11

di, qui tol -

14

lis pec - ca - ta mun - di: do - na no -

20

- bis pa - cem, do - na no - bis pa - cem,

24

do - na no - bis pa - cem, do - na no - bis pa -

32

- cem, do - na no - bis pa - cem.